

# HPLC-3000i



EPCC / PRODUCTS / APPLICATION / SOFTWARE / ACCESSORIES / CONSUMABLES / SERVICES

**Analytical Technologies Limited**

An ISO 9001 Certified Company

[www.analyticalgroup.net](http://www.analyticalgroup.net)

Engineered using the core competencies of our experience, HPLC-3000i provides superior data quality, excellent robustness and long-term performance.

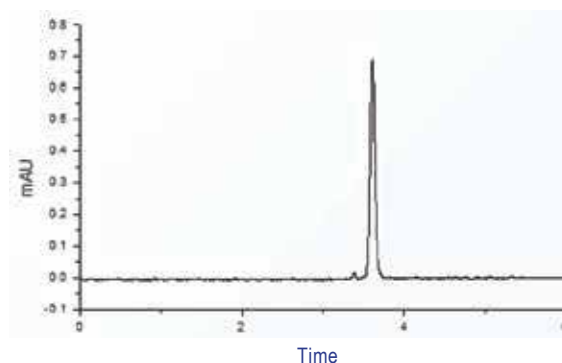
## ►► Key Technologies:

- Connections University
- Methods Validation Software and System
- Performance Certified Training and Education

## ►► Excellent Performances:

### The LOD as low as $4 \times 10^{-9}$ g/mL

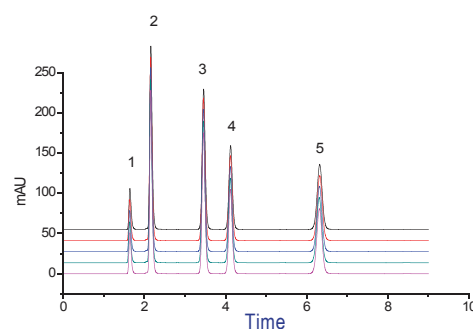
Mobile phase:	Methyl alcohol
Flow rate:	1 mL/min
Detection wavelength:	254 nm
RT:	1.0 s
Sample:	Naphthalene ( $1 \times 10^{-7}$ g/mL)



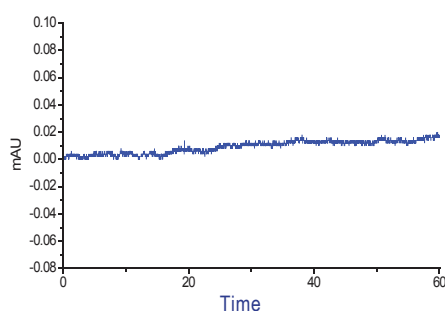
### Repeatability

1-uracil, 2-acetophenone, 3-toluene, 4-ethyl benzene, 5-fluorene

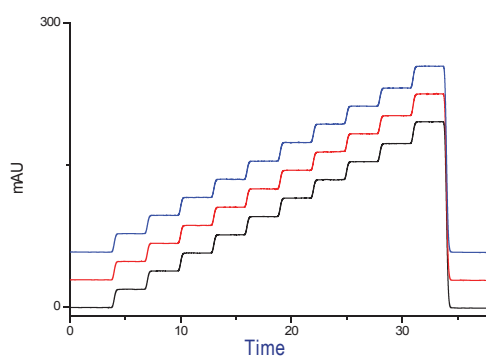
Peak area of fluorene:	RSD=0.048%
Retention time of fluorene:	RSD=0.017%



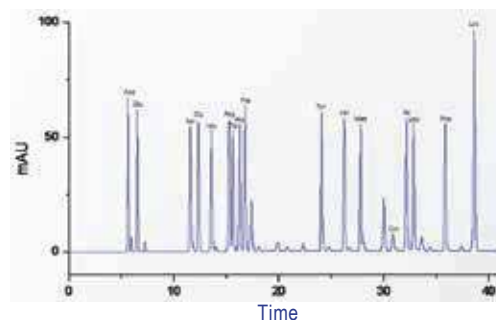
### Baseline Noise



### Gradient



High Resolution	
Analysis method:	HPLC-Pre-Column derivation method
Derivative agent:	Phenyl isothiocyanate (PITC)
Column:	Elite AAP C18 column
Sample:	17 amino acids



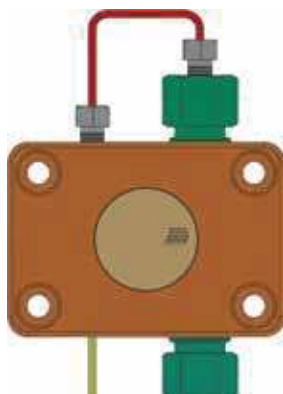
## ►► P3000 High Pressure Constant Flow Pump:



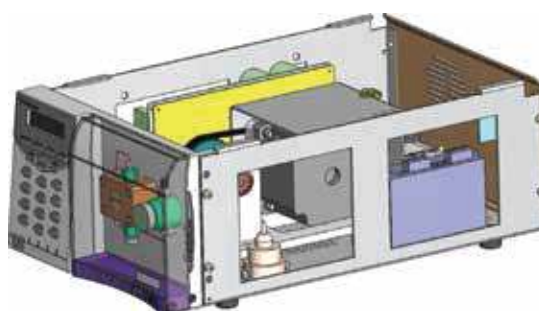
Specifications	
Flow Rate:	0.001-10.000 mL/min (Step: 0.001 mL/min)
Accuracy:	$\leq \pm 0.3\%$
Precision:	$\leq 0.1\%$ RSD
Max Pressure:	42 MPa (6000 psi)
Dimension/Weight:	420 mm×260 mm×160 mm/12 kg
Power:	AC 220 V, 50 Hz

## ►► Characteristics:

- Function keys for setting Max. pressure and switching A/B pump
- Decreased fluid pulsation
- Improved stepper motor operation stability by radiating way



Pump Head



Framework

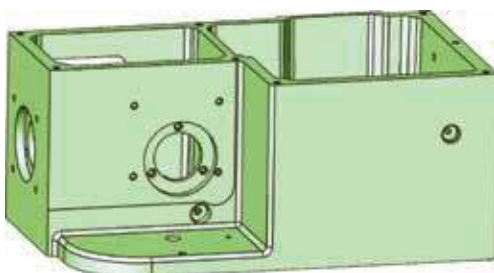
►► **D3000 UV/VIS Detector:**



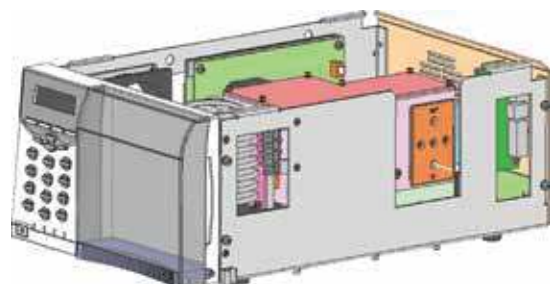
Specifications	
Wavelength:	190-700 nm
Noise:	$\leq \pm 1.0 \times 10^{-5}$ AU
Drift:	$\leq 2.0 \times 10^{-4}$ AU/h
Dimension/Weight:	420 mm×260 mm×160 mm/12 kg
Power:	AC 220 V ( $\pm 10\%$ ), 50 Hz/100 W

►► **Characteristics:**

- Function keys for wavelength program and D2 Lamp energy
- D2 lamp alarming function
- Casting monochromator framework for improved light path accuracy and sealing efficiency



Monochromator



Framework

## ►► O3000 Columns Oven:



Specifications	
Temperature:	R.T.+5°C~99°C
Setting Precision:	0.1°C
Control Accuracy:	±0.5°C
Dimension/Weight:	120 mm×65 mm×500 mm/8.5 kg
Power:	AC 220 V (±10%), 50 Hz

## ►► W3000 Workstation:

W3000 workstation is the classical chromatography data-processing system, with a completely fresh external-connect design hardware (USB port) and software based on Win OS, with up to date software design technology(O-O) and the experiences collection of many experts & clients, all of the above make it to be more functional, and easily-operated workstation.

W3000 is easily operated as MS OFFICE software, such as analysis of complex samples with visual and graphical button line. Call out chromatogram with clipboard under the software of WORD and create a report of pictures & words. W3000 can accommodate the Agress HPLC system, and any types of chromatography instruments. It is the ideal substitute of integrator, data processor and traditional workstation, so it will be your right hand in your laboratory analysis.

## ►► Characteristics:

- Simple for use
- Flexibility in data display
- Real-time and fast determination of peak area
- Easy review of entire system
- Real-time operating status and indicator feedback of instrument units
- Easy comparison of multiple chromatograms
- Customizable reports
- Supporting tools for GLP / 21 CFR Part 11——Audit trail of whole system and chromatograms
- User accounts-selectable rights, unique user profiles, allow to create a unique password to protect profiles of each user.



## Regulatory compliances



## Corporate Social Responsibility

Analytical Foundation is a nonprofit organization (NGO) found for the purpose of:



**Analytical**  
**Foundation**

1. Research & Innovation Scientist's awards/QC Professional Award : Quality life is possible by innovation only and the innovation is possible by research only, hence ANALYTICAL FOUNDATION is committed to identify such personalities for their contributions across various field of Science and Technology and awarding them yearly. To participate for award, send us your details of research / testing / publication at [Info@analyticalfoundation.org](mailto:Info@analyticalfoundation.org)

2. Improving quality of life by offering YOGA Training courses, Work shops/Seminars etc.

3. ANALYTICAL FOUNDATION aims to DETOXYFY human minds,souls and body by means of yoga, Meditation, Ayurveda, Health Care, Awards, Media, Events, Camps etc.

## Reach us @



 **Analytical**®  
Technologies Limited

HPLC Solutions   MultipleLabs   Analytical Bio-Med   Analytical Distributors   Analytical Foundation (Trust)

**Corporate & Regd. Office:**  
Analytical House, # E67 & E68,  
Ravi Park, Vasna Road, Baroda,  
Gujarat 390 015. INDIA

T: +91 265 2253620  
+91 265 2252839  
+91 265 2252370  
F: +91 265 2254395

E: [info@hplctechnologies.com](mailto:info@hplctechnologies.com)  
[info@multiplelabs.com](mailto:info@multiplelabs.com)  
[info@analyticalgroup.net](mailto:info@analyticalgroup.net)  
[info@analyticalbiomed.com](mailto:info@analyticalbiomed.com)

W. [www.analyticalgroup.net](http://www.analyticalgroup.net)  
[www.hplctechnologies.com](http://www.hplctechnologies.com)  
[www.multiplelabs.com](http://www.multiplelabs.com)  
[www.ais-india.com](http://www.ais-india.com)

Sales & Support Offices:  
across the country :  
Distributors & Channel  
partners World Wide