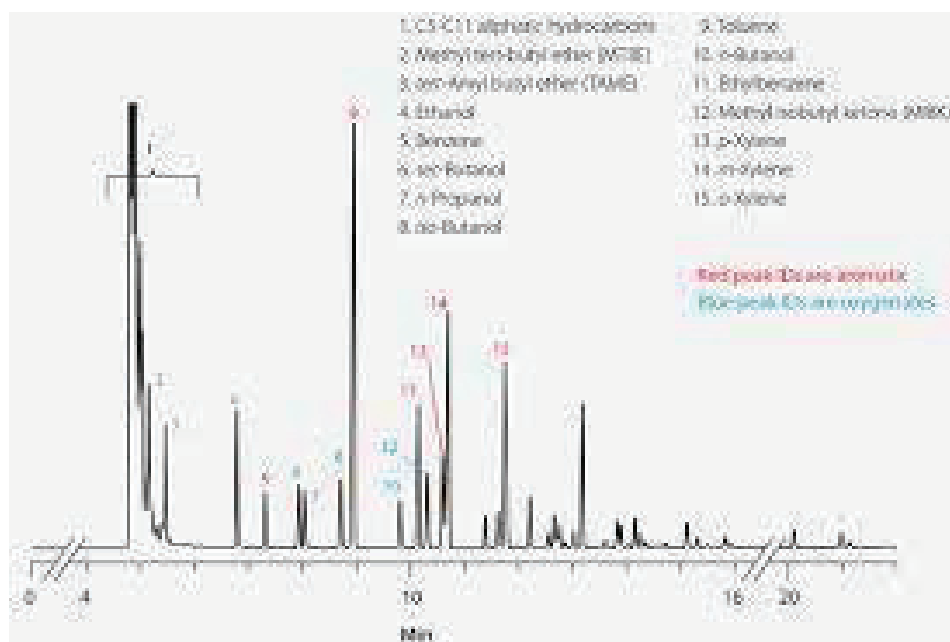
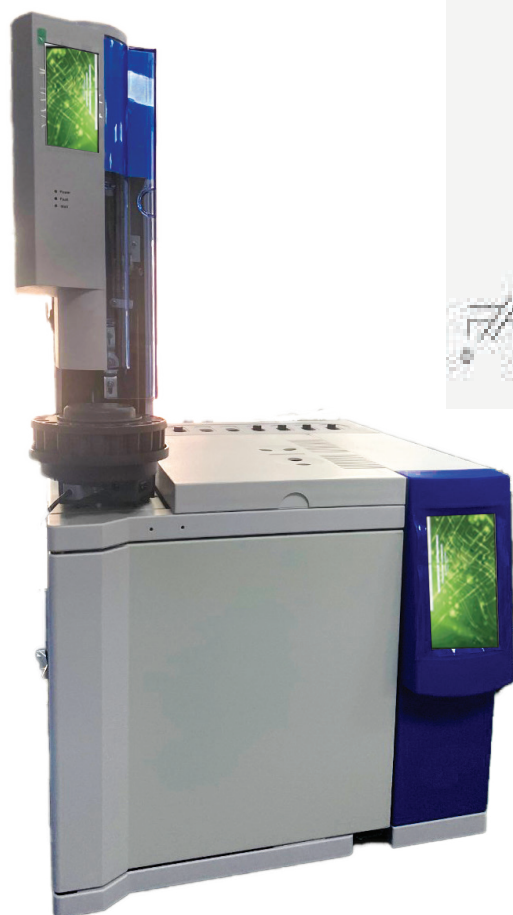


# GC-2979i

## Gas Chromatography



## ►► System Capability

- Assembly simultaneously: 3 inlets+3 detectors(FID, TCD, ECD, FPD and NPD)
- Carrier gas control: pressure/flow regulator
- 6 channels independ temperature control
- Controllable by PC

## ►► Column Oven

- Column oven dimension: 260×250×150mm
- Temp. control range: RT+6°C~399°C(0.1°C increment)
- Programming temp.-ramp : 8 steps
- Temp. ramp speed: 0.1~40°C≤1 minute(0.1°C increment)
- Fast cool down speed: 200~100°C≤3.5 minutes
- Temp. accuracy: ±0.1°C
- Max run time: 999.99 minutes

## ►► Inlets

- Split capillary, split/splitless capillary, packed
- Max temperature: 400°C

## ►► Detectors

Detector	Max Operating temp.	Limit of detection	Baseline Noise	Baseline drift (after 2hrs stabilization)	Linear dynamic range
FID	400°C	$\leq 5.0 \times 10^{-12}$ g/s (N-C16)	$\leq 2 \times 10^{-13}$ A	$5 \times 10^{-13}$ A/30 min	$\geq 10^7$
TCD	400°C	$\geq 8000$ mV.ml/mg (N-C16)	$\leq 20$ uV	$\leq 100$ uV/30min	$\geq 10^4$
ECD	350°C	$\leq 1 \times 10^{-13}$ g/ml ( $\gamma$ -666)	$\leq 20$ uV	$\leq 50$ uV/30min	$\geq 10^4$
FPD	400°C	S: $\leq 5.0 \times 10^{-11}$ g/s P: $\leq 1.4 \times 10^{-12}$ g/s	$\leq 2 \times 10^{-11}$ A	$\leq 4 \times 10^{-11}$ A/30min	S: $\geq 10^2$ P: $\geq 10^3$
NPD	400°C	N: $\leq 1 \times 10^{-12}$ g/s (Azobenzene) P: $\leq 5 \times 10^{-13}$ g/s (Malathion)	$\leq 4 \times 10^{-13}$ A	$2 \times 10^{-12}$ A/30min	N: $\geq 10^3$ P: $\geq 10^3$

## ►► Autosampler

Syringe spec	0.5, 1, 5, 10, 25, 50, 100, 250, 500 (μl)
Sampling vial	15 sample (Optional 121, 209)
Sampling times per sample	0~99
Max interval	999 minutes
Min sampling volume	0.1 μl
Max sampling volume	250 μl
Selection	1~20
Max sampling inlet	1
Max washing times	99
Max pumping times	99
Viscosity delay	0~60s
Pre-sampling and Post-sampling retention time	0~120s
Sampling needle speed	Fast, low
Extract, sampling speed	Fast, low
Control method	Interval self-control and signal counter-control

## ►► 2979i Workstation

- **Counter-Control:**

Can set up all parameters used in the analysis through workstation, and monitor real time information of detector flow.

- **Comprehensive Quantitative Method:**

Area normalization, external standard method, internal/multi-internal standard method, index analysis and grouping calculation.

## ►► Manual, automatic valve and valve switch



- Heating preservation valve box is available
- Manual and automatic valve selectable
- Customization is available
- One-time injection, all component analysis for complicated gas mixture analysts

## Regulatory compliances



## Corporate Social Responsibility

Analytical Foundation is a nonprofit organization (NGO) found for the purpose of:



**Analytical**  
**Foundation**

1. Research & Innovation Scientist's awards/QC Professional Award : Quality life is possible by innovation only and the innovation is possible by research only, hence ANALYTICAL FOUNDATION is committed to identify such personalities for their contributions across various field of Science and Technology and awarding them yearly. To participate for award, send us your details of research / testing / publication at [Info@analyticalfoundation.org](mailto:Info@analyticalfoundation.org)

2. Improving quality of life by offering YOGA Training courses, Work shops/Seminars etc.

3. ANALYTICAL FOUNDATION aims to DETOXYFY human minds,souls and body by means of yoga, Meditation, Ayurveda, Health Care, Awards, Media, Events, Camps etc.

## Reach us @



 **Analytical**®  
Technologies Limited

HPLC Solutions   MultipleLabs   Analytical Bio-Med   Analytical Distributors   Analytical Foundation (Trust)

**Corporate & Regd. Office:**  
Analytical House, # E67 & E68,  
Ravi Park, Vasna Road, Baroda,  
Gujarat 390 015. INDIA

T: +91 265 2253620  
+91 265 2252839  
+91 265 2252370  
F: +91 265 2254395

E: [info@hplctechnologies.com](mailto:info@hplctechnologies.com)  
[info@multiplelabs.com](mailto:info@multiplelabs.com)  
[info@analyticalgroup.net](mailto:info@analyticalgroup.net)  
[info@analyticalbiomed.com](mailto:info@analyticalbiomed.com)

W. [www.analyticalgroup.net](http://www.analyticalgroup.net)  
[www.hplctechnologies.com](http://www.hplctechnologies.com)  
[www.multiplelabs.com](http://www.multiplelabs.com)  
[www.ais-india.com](http://www.ais-india.com)

Sales & Support Offices:  
across the country :  
Distributors & Channel  
partners World Wide