

GC - 2979E

Gas Chromatography System



EPCC / PRODUCTS / APPLICATION / SOFTWARE / ACCESSORIES / CONSUMABLES / SERVICES

Analytical Technologies Limited

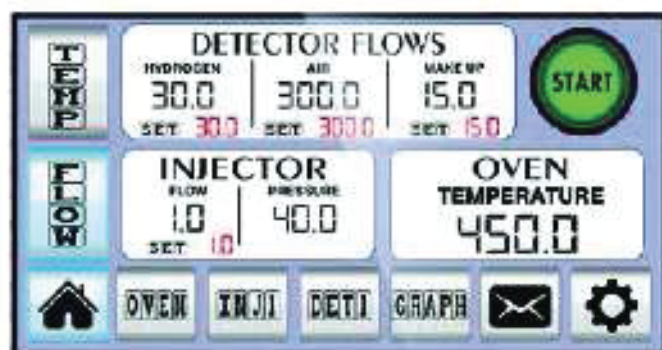
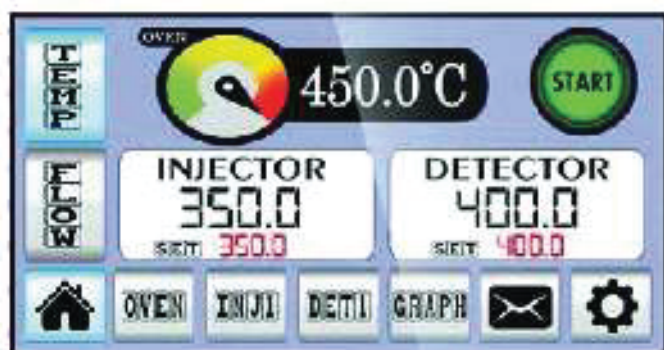
An ISO 9001 Certified Company

www.analyticalgroup.net

►► A Digital Chromatography Experience

There is a global demand for reliable gas chromatograph's. Most of the currently available devices are far more complex than many customer requirements and doesn't fit the budget.

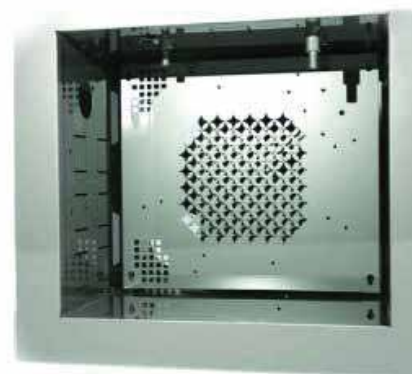
Gas Chromatograph's fit in this gap. Being economical, but offering fully digital models with reliable, accurate and fast performance catering the need of variety of industries and applications such as food and beverage, environmental, agriculture, flavor and fragrance, petrochemical, pharmaceuticals etc.



►► OVEN

A low thermal inertia oven helps to heat and cool fast with an additional cooling fans for better temperature control and minimum cooling time.

- Column oven (H x W x D): 30 x 30 x 20 cm; 18 L capacity.
- Operating temperature range: ambient +5° C to 450° C
- Cryogenic option minimum temperature: -100° C with liquid nitrogen; -50 with liquid CO₂
- Temperature set point resolution: 0.1° C
- Number of ramps/plateaus: 24/25
- Maximum heating rate: 140° C/min
- Oven cool down (22° C ambient): 300° C to 50° C in less than 4 minutes.



►► GAS CONTROL

IDPC(Intelligent Digital Pneumatic Controller): Integrated both pressure and flow sensors with choice of true flow or pressure for carrier gas. Upto 24 channels for injection and detection systems or auxiliary gases.

Gas selection(helium, hydrogen, nitrogen, ArgonMethane) for carrier and detectors make up gases. User has the option to select either constant flow or constant pressure or constant velocity through touch interface or through Crystal software and both simultaneously displayed for each device. UP to 7 pressure and/or flow ramps can be programmed for injectors.

Pressure can be adjusted up to 145psi in 0.01psi steps. Inbuilt Atmospheric pressure variation compensation. Optimized gas saver mode allows user to put the instrument in standby thus save valuable resources.

- Up to 24 channels of integrated electronics gas control
- split ratio: upto 1:12500
- Pressure range: 0 - 1000 kpa (0 - 145 psi)
- Modes: Constant and programmed pressures and flows with gas saver function split flow can be OFF or from 10 to 1250 ML/Min

►► OVEN

Mono block purge-free injector with intelligent Digital Pneumatic Controller(iDPC). Split/ Splitless time adjustable with 0.1 ml increments through touch screen interface or through Crystal software . Allows digital programming and control of column head pressure from 0.01 psi up to 145 psi with pressure resolution of 0.003psi programming of split ratio from 10 to 1250 with 0-200ml/min total flow for N2 and up to 1250 ml/min for H2/He. Different operation modes: split, splitless, split/splitless, pulsed split/splitless, large volume injections, Packed column simulation. Also compatible with Head Space and Online Purge & Trap can work at constant flow or constant pressure and allows programming up to 7 ramps of flow and/or pressure, independent of the column size and carrier gas. Compatible with 1/8" & 1/16 packed columns, 0.53 mm I.D. semicapillary and capillary columns upto 0.1mm I.D. Maximum temperature programming up to 450°C

►► **Packed 1/8" Injector with iDPC**

Packed 1/8" Mono block purge-free Injector with intelligent Digital Pneumatic Controller (iDPC). Allows digital programming and control of column head pressure from 0.01 psi up to 145 psi with pressure resolution of 0.003 psi. Can work at constant flow or constant pressure and allows programming up to 7 ramps of flow and/or pressure, independent of the column size and carrier gas. Compatible with 1/8" packed columns as well as 0.53 mm I.D. semicapillary columns. Maximum temperature programming up to 450°C.



►► **Programmable Temperature vaporizer(PTV) Injector with iDPC**

Allows the injection of a large sample volume without concentration. Time savings. Temperature programming from -50°C up to 450°C at a heating rate up to 10°C/sec. Injection volume up to 5ml. Different packing liners are available. Allows splitless time and cooling time programming. iDPC for carrier gas. Purgefree injector.



►► **6 ports automatic gas sampling Injection Valves with iDPC**

Automatic, temperature controlled 6-port Gas Sampling Valve. Includes a 316 stainless steel body and graphite rotor. Maximum working temperature: 350°C. 1/16 in Connections. Exchangeable external loops of different volumes: 0.1, 0.2, 0.5, 1.0 or 2.0 ml. Allows control and temperature programming of the injection valve through the touchscreen and/or software. It makes the injection valve cycles automatic and controls the injection time through the GC microprocessor and/or software. Includes a standard iDPC pneumatic control that allows to use the GSV without a Standard or a Capillary Injector.



►► **Flame Ionization Detector with iDPC**

Flame Ionization Detector system with quartz jet and intelligent Digital Pneumatic Control (iDPC) for all gases with excellent response to most organic compounds. Compatible with packed and capillary columns. High sensitivity, high linearity and wide dynamic linear range. Allows digital programming and control for make up and flame gases through the touchscreen and/or software. Automatic flame switch on. Flameout detection and automatic re-ignition. High stability and excellent linear range digital electrometer amplifier. Four working ranges and ten attenuation settings. Autozero. Allows automatic flame switch on from touchscreen and /or software as well as automatic shut off of flame gases if flow stops.

Minimum detectable level: <1.4 C/s(Tridecane)

Linear Dynamic range: 10^7

Max flow rate of H₂: 100ml/min

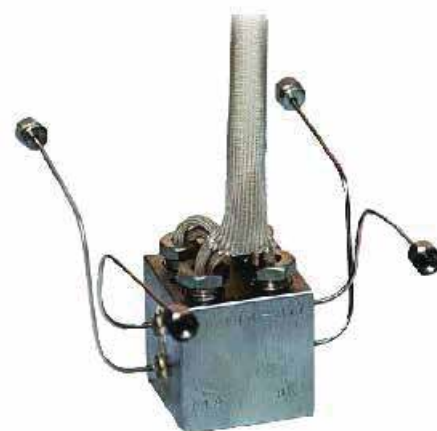
Max flow rate of Air:1000 ml/min



►► **Thermal Conductivity Detector TCD detector with iDP**

Thermal Conductivity Detector with intelligent Digital Pneumatic Controller (iDPC). High sensitivity hot wire, with four filaments Re/W detection technique. Compatible with other filaments and/or high sensitivity thermistors. It allows connection of two columns. High stability continuous intensity source, Digital electrometer/amplifier. In case flow stops, the TCD will shutoff automatically to protect filament.

Filament current 0-300 mA.



►► Specification

Input Channel Count	2
Input Voltage Range	-2.5V~+2.5V
Integral Sensitivity	1UVS
Input impedance	10 MΩ
Maximum Peak Number	> 1000
Smallest signal Resolution	1UVS
Dynamic Range	10 ⁷
Minimum Time Resolution	0.01min
Linear Degrees	+0.01%
Minumum Peak Width	0.1 s

►► Peak Processing Parameters

Automatic time program;
 Manual integral function;
 Automatic identification of complex peak
 form and accurate division;
 Automatic tracking and correct baseline;
 Negative influence peak eliminates;
 Accordance with GMP regulaons;
 Identify methods of spectrum peak qualitative:
 Keep time method;
 Component identification method

►► Integral Parameters

Peak area or peak high;
 Quantitatitve calculation method:
 Normalization method;
 Internal standard method;
 Dividing group method;
 Internal standard method;
 External standard method.

HPLC Servicing, Validation, Trainings and Preventive Maintenance :

HPLC Servicing :HPLC Servicing : We have team of service engineers who can attend to any make of HPLC promptly @the most affordable cost.

Trainings :We also take up preventive Maintenance to reduce downtime of HPLC's Trainings.

AMC's/CMC :AMC's/CMC :We offer user training both in-House and at customer sites on HPLC principles, operations, trouble-shooting.

Validations :Validations :We have protocols for carrying out periodic Validations as per GLP/GMP/USFDA norms.

Instruments :Instruments :We offer instruments/Renting Services Modules like pumps,detector etc. on Rent.



About Analytical Technologies

Analytical Technologies is synonymous for offering technologies for doing analysis and is the Fastest Growing Global Brand having presence in at least 96 countries across the global. Analytical Technologies Limited is an ISO:9001 Certified Company engaged in Designing, Manufacturing, Marketing & providing Services for the Analytical, Chromatography, Spectroscopy, Bio Technology, Bio Medical, Clinical Diagnostics, Material Science & General Laboratory Instrumentation. Analytical Technologies, India has across the Country operations with at least 4 Regional Offices, 6 Branch Offices & Service Centers. Distributors & Channel partners worldwide.

Our Products & Technologies



UV-TS 2080



Infra FTIR



Optima Gas
Chromatograph
3007



Optima Gas
Chromatograph



Flash
Chromatograph



Atomic Absorption
Spectrophotometer



Liquid Particle
Counter



Optical Emission
Spectrophotometer



STA



Semi Auto Bio
Chemistry Analyzer



LCMS



GCMS



XRD



Total Organic
Carbon 3800



Fully Automated
CLIA



NOVA-2100
Chemistry Analyzer



PCR/Gradient PCR/
RTPCR



TOC
Analyzer



Laser Particle
Size Analyzer



Ion Chromatograph



Water purification
system

Regulatory compliances



Corporate Social Responsibility

Analytical Foundation is a nonprofit organization (NGO) found for the purpose of:



Analytical Foundation

1. Research & Innovation Scientist's awards/QC Professional Award : Quality life is possible by innovation only and the innovation is possible by research only, hence ANALYTICAL FOUNDATION is committed to identify such personalities for their contributions across various field of Science and Technology and awarding them yearly. To participate for award, send us your details of research / testing / publication at Info@analyticalfoundation.org

2. Improving quality of life by offering YOGA Training courses, Work shops/Seminars etc.

3. ANALYTICAL FOUNDATION aims to DETOXYFY human minds,souls and body by means of yoga, Meditation, Ayurveda, Health Care, Awards, Media, Events, Camps etc.



HPLC Solutions MultipleLabs Analytical Bio-Med Analytical Distributors Analytical Foundation (Trust)

Corporate & Regd. Office:
Analytical House, # E67 & E68,
Ravi Park, Vasna Road, Baroda,
Gujarat 390 015. INDIA

T: +91 265 2253620
+91 265 2252839
+91 265 2252370
F: +91 265 2254395

E: info@hplctechnologies.com
info@multiplelabs.com
info@analyticalgroup.net
info@analyticalbiomed.com

W. www.analyticalgroup.net
www.hplctechnologies.com
www.multiplelabs.com
www.ais-india.com

Sales & Support Offices:
across the country :
Distributors & Channel
partners World Wide