

# EOK - 3200

Kits Optimized for your experiments



EPCC / PRODUCTS / APPLICATION / SOFTWARE / ACCESSORIES / CONSUMABLES / SERVICES

**Analytical Technologies Limited**

An ISO 9001 Certified Company

[www.analyticalgroup.net](http://www.analyticalgroup.net)

►► **Features :**

- Strong zirconia crystal beads;
- DNase & RNase Free self-sealing tubes;
- No hazard formula, such as Phenol chloroform;
- DNA/RNA protective reagents included.



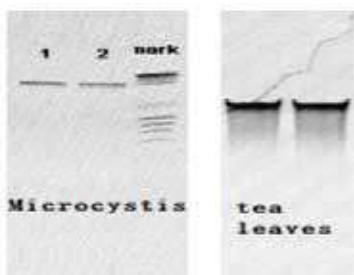
►► **Performance of kits :**

- Storage stability;
- Repeatability;
- RNA extraction;
- Long fragment;
- Tissue DNA extraction;
- Bacteria DNA extraction;
- Plant DNA extraction;
- Bone DNA extraction;
- Low-volume sample extraction.



►► **Examples :**

Take 100mg sample - Add to grinding tube - Add the appropriate amount of lysis buffer - Program the parameters in the ATL instrument - Run - Take out the sample tubes for centrifuging to get the supernatant - Extract & purify the nucleic acids by magnetic beads - Test the concentration of the nucleic acids by UV vis spectrophotometer and agarose gel electrophoresis.



**Plant Tissue PIII (DNA)**

Sample	OD260/280	Concentration, ng/μl
Microcosmic	1.91	29.35
	1.9	28.4
Tea leaves	1.865	55.5
	1.74	58.8



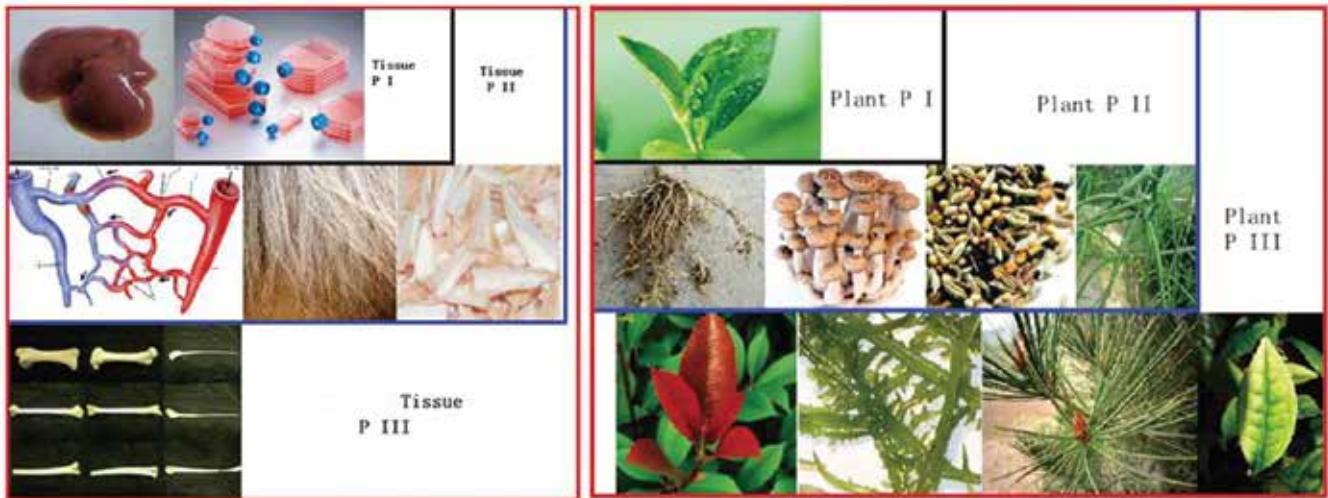
**Animal Tissue PII (DNA)**

Sample	OD260/280	Concentration, ng/μl
Fresh bone	1.76	437.5
	1.775	416.5



**Microorganism Tissue PII (DNA)**

Sample	OD260/280	Concentration, ng/μl
Listeria Monotonousness	1.91	270
	1.93	270.4
Coccus	1.87	369.9
	1.85	370
Bacillus sublimity	1.86	200.1
	1.86	193.2



►► **Specification :**

Kits name	Applications
Plant P I	Leaves, stems, buds, etc.
Plant P II	Roots, stems, woody plant phloems, tubers, root tips, seed germs, large fruiting fungi, etc.
Plant P III	Special samples such as polysaccharides, polyphenols, algae, pine needles, teas, heathers, etc.
Tissue P I	Common animal tissues, cell culture, etc.
Tissue P II	Hair, cartilages, skin, fresh bones, etc.
Tissue P III	Old bones.
Microbe P I	Common bacteria such as gram-negative bacteria.
Microbe P II	Yeasts, Gram-positive bacteria, microorganisms, etc.
Plant RNA	Plants, fungi mycelia and fruiting bodies.
Tissue RNA	Ordinary animal tissues, cultured cells, blood.
Microbe RNA	Bacteria, microorganisms, etc.

## Regulatory compliances



## Corporate Social Responsibility

Analytical Foundation is a nonprofit organization (NGO) found for the purpose of:



**Analytical**  
**Foundation**

1. Research & Innovation Scientist's awards/QC Professional Award : Quality life is possible by innovation only and the innovation is possible by research only, hence ANALYTICAL FOUNDATION is committed to identify such personalities for their contributions across various field of Science and Technology and awarding them yearly. To participate for award, send us your details of research / testing / publication at [Info@analyticalfoundation.org](mailto:Info@analyticalfoundation.org)

2. Improving quality of life by offering YOGA Training courses, Work shops/Seminars etc.

3. ANALYTICAL FOUNDATION aims to DETOXYFY human minds,souls and body by means of yoga, Meditation, Ayurveda, Health Care, Awards, Media, Events, Camps etc.

## Reach us @



 **Analytical**®  
Technologies Limited

HPLC Solutions   MultipleLabs   Analytical Bio-Med   Analytical Distributors   Analytical Foundation (Trust)

**Corporate & Regd. Office:**  
Analytical House, # E67 & E68,  
Ravi Park, Vasna Road, Baroda,  
Gujarat 390 015. INDIA

T: +91 265 2253620  
+91 265 2252839  
+91 265 2252370  
F: +91 265 2254395

E: [info@hplctechnologies.com](mailto:info@hplctechnologies.com)  
[info@multiplelabs.com](mailto:info@multiplelabs.com)  
[info@analyticalgroup.net](mailto:info@analyticalgroup.net)  
[info@analyticalbiomed.com](mailto:info@analyticalbiomed.com)

W. [www.analyticalgroup.net](http://www.analyticalgroup.net)  
[www.hplctechnologies.com](http://www.hplctechnologies.com)  
[www.multiplelabs.com](http://www.multiplelabs.com)  
[www.ais-india.com](http://www.ais-india.com)

Sales & Support Offices:  
across the country :  
Distributors & Channel  
partners World Wide