

# DM - 3000

---

## 3D DIGITAL MICROSCOPE



EPCC / PRODUCTS / APPLICATION / SOFTWARE / ACCESSORIES / CONSUMABLES / SERVICES

**Analytical Technologies Limited**

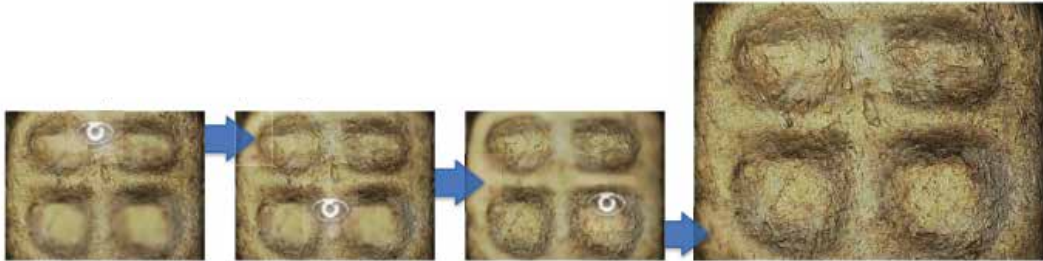
An ISO 9001 Certified Company

[www.analyticalgroup.net](http://www.analyticalgroup.net)

## ►► High quality observation

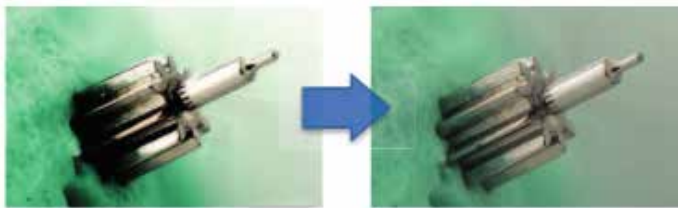
### Auto focus - Multifocus

Ultra fast auto-focus and multi-focus! Get a fully focussed image with one click thanks to our high speed algorithm and very accurate motorized Z-axis movements (50 nano-meters per step).



### High Dynamic Range (HDR)

Save time by quickly optimizing the image. With 1 click, the HDR function creates an image with the perfect exposition by combining many levels of light intensity: all information in the highlights and the dark areas is captured without any difficulty.



### 2D Measurement

The DM-3000 offers accurate and calibrated measurements in real-time, including length, area, angle, diameter or automatic surface area. The combination of encoded optics and powerful software eliminates any human errors by automatically selecting and displaying the correct lens, adapter and scale on the screen at any time. In addition, the actual dimension and measurement results can be saved on the captured image or as a CSV file.

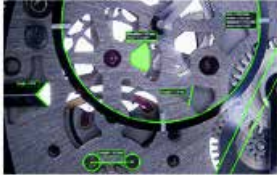
### Auto count functions

Advanced software algorithm allows automatic detection and count of particles, based on contrast or color values: with 1 click the system automatically counts parts that have similar colors, with advanced statistics.



### Statistics & Excel reports

Save time by installing Microsoft Excel and automatically create reports including images, lens and magnification details, as well as measurement information. Several templates are available or customizable to your taste. Reports can be printed, saved, or exported to spreadsheet applications.

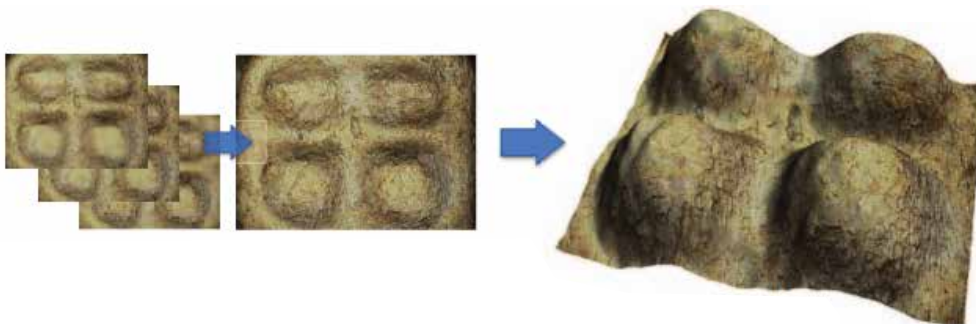


|     |        |       |
|-----|--------|-------|
| L1  | Radius | 307µm |
| L2  | Length | 98µm  |
| C3  | Length | 200µm |
| AB1 | Angle  | 42°   |
| L2  | Radius | 307µm |
| C3  | Length | 98µm  |
| C4  | Length | 200µm |
| AB2 | Angle  | 42°   |

## ►► Fastest way to create 3D Model

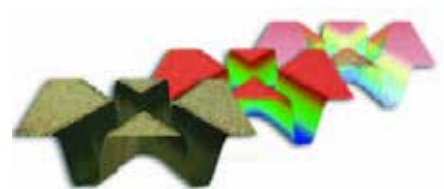
### Smoother, and more accurate scanning with 0.05µm/pulse precision

When capturing 10 image planes, it only takes 1 second to display a high quality 3D model. The integrated stepping motor allows for faster, smoother, and more accurate scanning with 0.05µm/pulse precision and 30mm of automated travel.



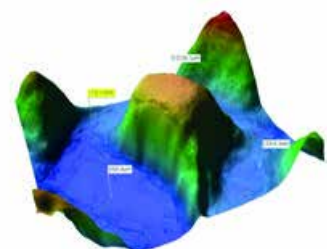
### 3D Display

3D model information can be displayed as original color, pseudo, or as a wireframe, maximizing the amount of information that can be taken from a 3D model. Original and pseudo color can be mixed on the 3D model.



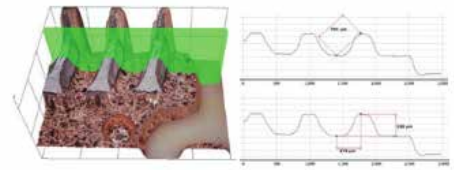
### Point Height Measurement

Display point height by simply clicking on the 3D model. With each click, height value labels are displayed from a standard zero point or a zero point can be set (new reference point) from a specific position on the model. Point height measurements are possible in both 2D and 3D rendered images.



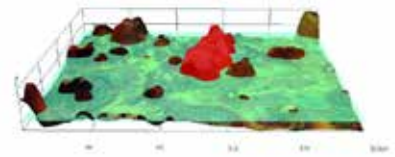
## Profiling

Simply adjust the slicer to visualize and measure any details on the 3D object: the profile created is like a virtual vertical cross section allowing precise measurements.



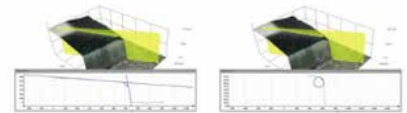
## Volume and area

Volume and area can also be measured on the 3D object by adjusting the horizontal cross section and clicking on the area of interest



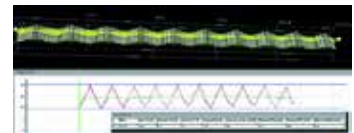
## Angle/radius in 3D

Using the profile measurement function, it's very simple to measure any radius on a 3D object by simply "drawing" a circle with 3 points or any angle by selecting 2 lines crossing each other.



## Roughness (Ra, Rz, Rzjis)

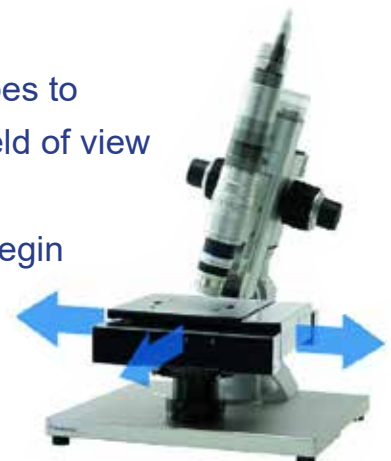
The powerful 3D software enables accurate line roughness measurement Ra and Rz and is compatible with optional surface roughness measurements (Sa, Sq, and many more).



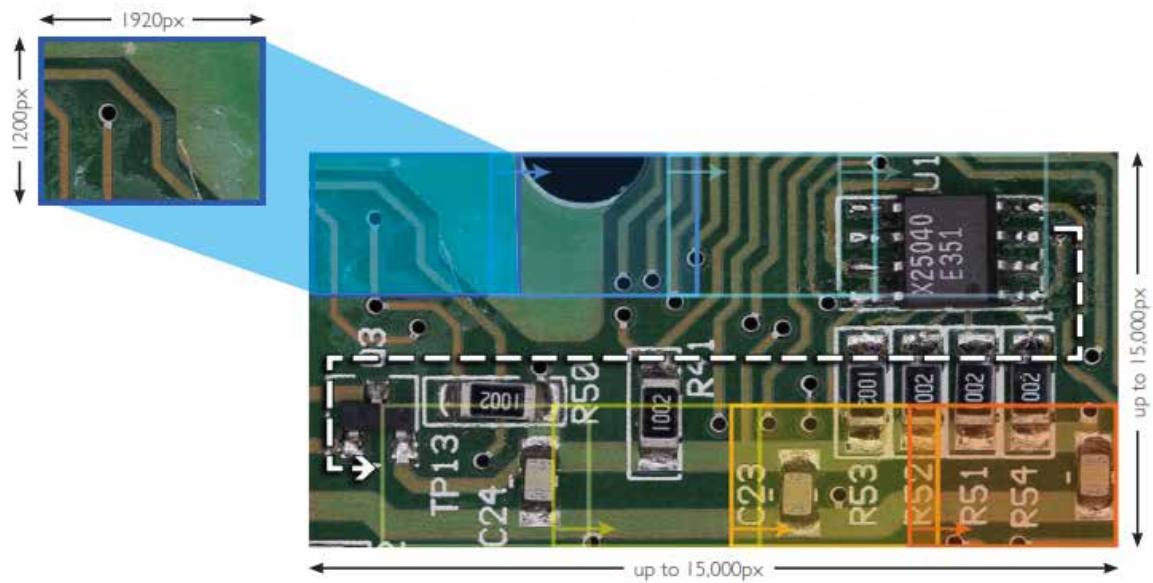
## ►► Easy 2D and 3D Tiling

### Combining wide-view and high-resolution images

Until now, it was a constant challenge for optical microscopes to capture images with a high optical resolution and a wide field of view simultaneously. new process does not require a specified position to match tile to tile. The image will automatically begin tiling seamlessly in real-time just by moving the XY stage. This new method increases the field of view up to more than 350 times while retaining a high optical resolution.







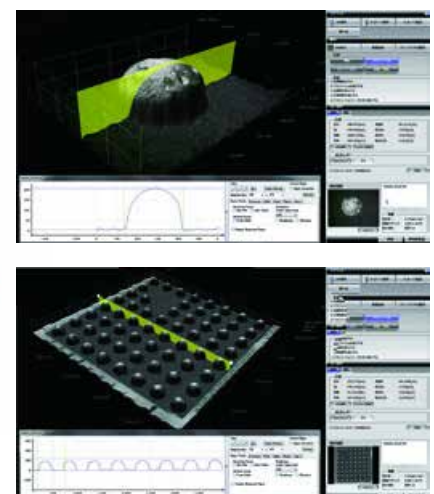
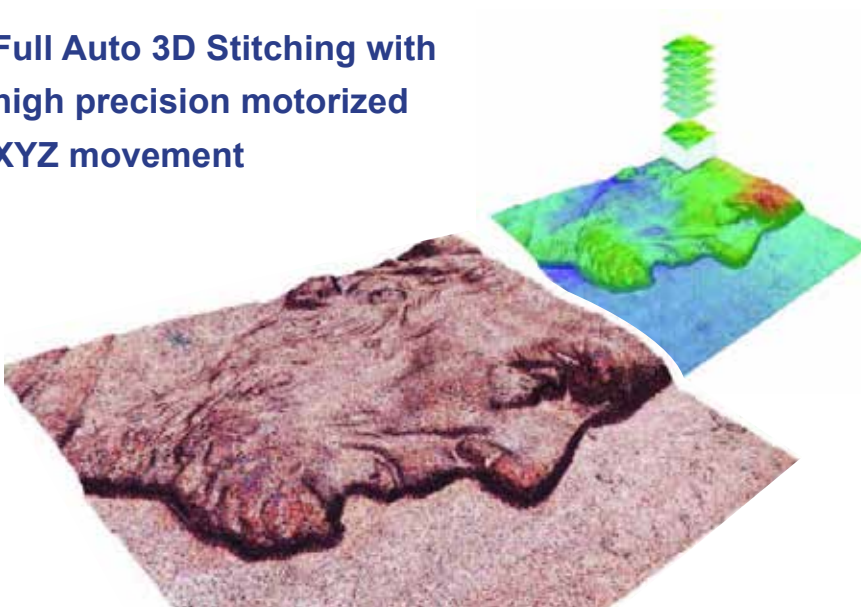
### Easy panorama at micro scale:

discover a new relationship between Field Of View (FOV) and magnification: the new technology easily allows detailed observation allowing fine measurement while getting the advantages of wide field of view.

### Volume and area

Volume and area can also be measured on the 3D object by adjusting the horizontal cross section and clicking on the area of interest

### Full Auto 3D Stitching with high precision motorized XYZ movement



3D stitching of BGA balls

## ►► High quality optics

All lenses include high-performance zoom incorporated technologies, as well as highgrade built in illumination, and precision mechanism designs, crafted with pride by the lens manufacturer.



The patented motorized rotary head creates a unique 360° «helicopter» view over an object :discover inaccessible details, without any manipulation.

### Low Range High Resolution Zoom Lens

The high-performance zoom lens has a compact body, provides a high resolution image, and offers a large optical depth-of-field with the ability to utilize an even larger digital depth-of-field. The lens can be handheld and accommodates numerous applications through the attachment of 13 various adapters covering a magnification range of 6x-320x.



|                  |                |
|------------------|----------------|
| Magnification    | 20~160x        |
| Field of view    | 15.4~2.0mm (H) |
| Working distance | 44mm           |

### Dual Illumination Revolver Zoom Lens

Incredibly wide zoom range with a triple objective turret. The dual illumination mechanism provides both co-axial and ring lighting. The operator is free to choose either setting or a mix of both in order to cover a multitude of applications. The lighting system is integrated into the lens and no additional cables are required



|                  | Low-Range       | Mid-Range       | High-Range      |
|------------------|-----------------|-----------------|-----------------|
| Magnification    | 35~250x         | 140~1000x       | 350~2500x       |
| Field of view    | 8.71~1.22mm (H) | 2.18~0.31mm (H) | 0.87~0.12mm (H) |
| Working distance | 10.0mm          | 10.0mm          | 10.0mm          |

|                  | Low-Range       | Mid-Range       | High-Range      |
|------------------|-----------------|-----------------|-----------------|
| Magnification    | 35~250x         | 140~1000x       | 700~5000x       |
| Field of view    | 8.71~1.22mm (H) | 2.18~0.31mm (H) | 0.43~0.06mm (H) |
| Working distance | 10.0mm          | 10.0mm          | 3.4mm           |

### High Resolution Zoom Lens with Optical 3D Rotation

This universal lens can be equipped with a wide selection of optical adapters. Attaching the rotary head adapter allows 360 Degree revolution with the ability to inspect at multiple angles. The various exclusive adapters snap-on, allowing one-touch replacement and a magnification range that expands observation from 20x-800x.



|                  |                      |
|------------------|----------------------|
| Magnification    | 50~400x              |
| Field of view    | 6.1~0.78mm (H)       |
| Working distance | 34mm (KZ) /63mm (SZ) |

## High Range / High Resolution 10x Co-Axial Zoom Lens

The high range optical zoom lens incorporates high expandability and the highest resolution in the MD series. With six interchangeable objective lenses, the lens covers a magnification range of 35x-7000x. A directional lighting adapter is provided for co-axial vertical lighting to achieve intricate optical observation.



| Magnification    | 35~350x         | 70~700x         | 140~1400x       | 140~1400x       | 350~3500x       | 700~7000x       | 1000~10,000x   |
|------------------|-----------------|-----------------|-----------------|-----------------|-----------------|-----------------|----------------|
| Field of view    | 9.83~1.05mm (H) | 4.92~0.47mm (H) | 2.46~0.23mm (H) | 2.21~0.21mm (H) | 0.88~0.09mm (H) | 0.44~0.04mm (H) | 0.3~0.03mm (H) |
| Working distance | 34mm            | 21mm            | 30.5mm          | 12mm            | 10.6mm          | 3.4mm           | 1mm            |

## ►► High performance stands

A high performance lens requires a high performance stand to show its' power while being operated. It is the stand that connects the lens to the operator's hand, meaning that the stand must have a high level of precision and be easy to use. Combine this stand with the optional Electronic Focus Block (0.05µm/-pulse) for 3D observation and height measurements.



### Dynamic Focus Control (Z-Axis)

With the motor controller built into the main unit, the stand is able to easily achieve extremely high precision. The stand also has an incredibly long travel range with 30mm of motor controlled travel and 85mm of manually controlled travel.

### Inclination stand

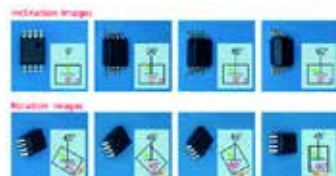
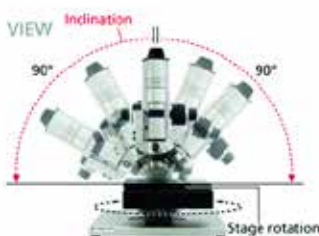
Choose up to 180 degrees of inclination with stage rotation for target observation.

### Motorized XY-Axis Stage

Designed with a compact body and integrated motor drivers, it can be easily controlled by joystick or dragging mouse. 40mm x 40mm working range with high precision of 0.04 µm step.

### Interactive 3D Controller

Redefining ease of use: control with one hand the auto XYZ movement, capture images and much more!

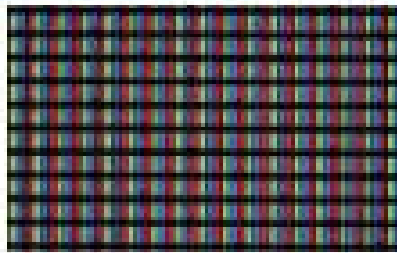


### PCB & Micro Electronics



Soldering

x400



LCD Screen

x1600

### Watch Making



Watch anchor escapement

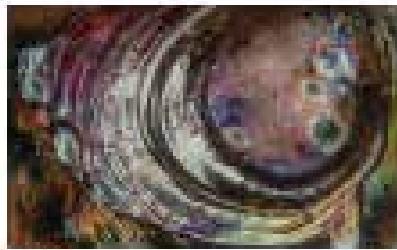
x1000

### Material Sciences



Broken composite

x400



Welding

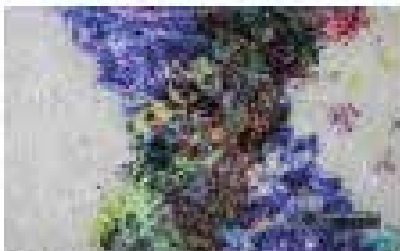
x400



Metal fracture

x1000

### Forensics



Document fabrication

x1000

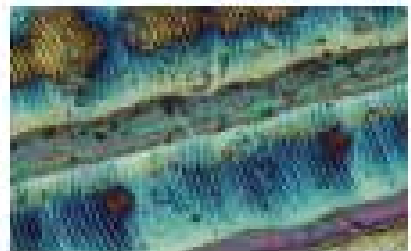
### Art Restoration



Detail of a painting

x1000

### Nano Technology



Nano structure

x10000

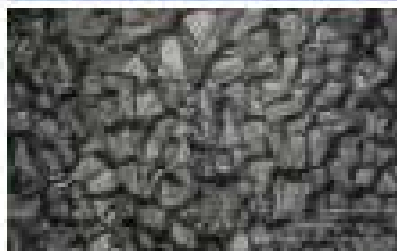
### Cosmetics



Hair surface

x10000

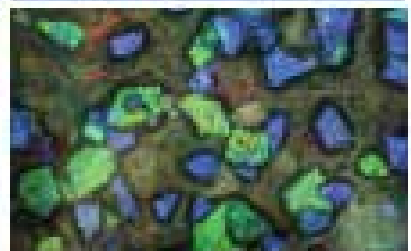
### Metallography



Metal crystals

x1000

### Security printing



Ink pigments

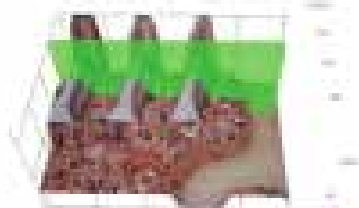
x10000

### 3D View and measurement



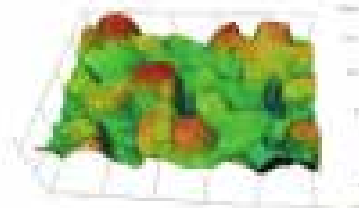
Thread of a screw

x400



Hybrid Component

x1000



Copper abrasive

x1000





## ►► Specifications

| Basic Functions: Camera Control Unit |                          |   | Standard Software           |   |
|--------------------------------------|--------------------------|---|-----------------------------|---|
| Camera                               | Imaging Device           | 1/1.9-inch 2.38 Mega-pixel<br>CMOS Image Sensor                                   | Observation Functions       | Camera Setup Preview  |
|                                      | Total Pixels             | 1952 (H) × 1241 (V)   |                             | Mode Function (save camera settings)  |
|                                      | Effective Pixels         | 1945 (H) × 1225 (V)   |                             | My Com Communication (ACS)  |
|                                      | Visual Pixels            | 1920 (H) × 1200 (V)   |                             | Gamma Correction / Edge Enhancement   |
|                                      | Scanning Method          | Progressive Scan  |                             | Hue / Chroma Correction and Chroma ON/OFF                                       |
|                                      | Frame Rate               | 50 Frame/Sec (Max)<br>at 1920 x 1200 Resolution<br>100 Frame/Sec (Max) at Binning |                             | Brightness Level  |
|                                      | Electronic Shutter       | Auto (1/24 ~ 1/100000)<br>Manual 1 ~ 1/50000                                      | Observation Tool            | Live Anti-Halation / HDR  |
|                                      | Supercharge Shutter      | Preference Setup (17 ~ 1/100000)  |                             | Camera Shake Correction   |
|                                      | Gain                     | Auto / Manual 0dB~12dB  |                             | Auto Brightness / Tone Curve Adjustment   |
|                                      | White Balance            | AUTO (One Push), MANUAL (R, B)  |                             | Focus Control / Focus Indicator   |
|                                      | Back Focus               | NOT Required  |                             | Light Shift (Full, Partial, Lateral and Others)                                 |
|                                      | Lamp                     | High Intensity LED  |                             | LED Lamp ON/OFF   |
| Light Source                         | Lamp Life                | 30,000 hours (Average)  | Various Functions           | Real-Time Digital Zoom / Rotary Head Control                                    |
|                                      | Color Temperature        | 5700K (Typical)   |                             | Grid Settings (Various Functions are available)                                 |
| Output                               | Camera                   | USB 3.0 Series B  |                             | Custom Tool Bar and Quick Function Key  |
|                                      | MyCom Contoller          | USB 2.0 Series B<br>ACS, Rotary, External Devices, Others                         |                             | Split Monitor (Horizontal, Vertical, 4 window)                                  |
| Input                                | Motorized Z-Axis         | 5 Phase Step Motor Driver Integrated  |                             | Cropping Image / Turning Over, ±90 Rotation                                     |
|                                      | External                 | Foot Switch (Capture / Capture Image)   |                             | Full Focus / Auto-Focus   |
| Interface                            | USB Ports                | USB 2.0 Series A / 2Types   | Enhanced Digital Processing | Quick Extended Depth of Field   |
|                                      | Through PC               | LAN, USB 3.0 / 2.0, HDMI, Others  |                             | Auto Multi-Focus 3D Merge Depth Composition                                     |
| Power                                | Supply Voltage           | AC100V~240V 50/60Hz   |                             | Auto-Positioning Depth Composition  |
|                                      | Consumption              | 120 VA  |                             | 3D Multi-Focus / 3D Model Preview Function                                      |
| Environmental Resistance             | Ambient Temperature      | 5~40 (41~104F)  |                             |   |
|                                      | Relative Humidity        | 20~80% RH (No Condensation)   |                             |   |
|                                      | Atmosphere               | Corrosive Gas Prohibited  |                             |   |
|                                      | Altitude                 | Below 2000 Meter  |                             |   |
| Weight                               | Storage Temperature      | 15 C~50 C (No Condensation)   | Measurement Functions       | High-Resolution Image (10560×6600 ~ 2400×1800)                                  |
|                                      | Contamination Degree     | 2   |                             | High Dynamic Range (HDR) / Anti-Halation Function                               |
|                                      | Overvoltage Level        | II  |                             | Image Adjustment:<br>Contrast, Edge, Hue/Chroma Correction                      |
|                                      | Main Unit                | 3.6 Kg (7.94lb)   |                             | Image Improvement:<br>Auto Brightness / Tone Curve, Noise Removal               |
| Dimension                            | Camera Unit              | 1.0 Kg (2.20lb)   |                             |   |
|                                      | Main Unit                | 270mm (W) × 75mm (H) × 230mm (D)<br>10.63" (W) × 2.95" (H) × 9.06" (D)            |                             |   |
| Basic Functions: Motorized XYZ Stage |                          |   | Recording Utility           | Auto Calibration Select (ACS):<br>Recognize Lens, Zoom, Objective Lens, Adapter |
| XY Axis                              | Effective Stroke         | 40 x 40 mm (1.57" x 1.57")  |                             | Distance, Angle, Radius, Diameter, Area and Other Tools                         |
|                                      | Maximum Speed            | 8 mm / Sec  |                             | Automatic Measurement:<br>Auto-Count, Auto-Area, Auto-Edge Detection            |
|                                      | Load Capacity            | 3.0 kg  |                             | Scale Display (Various Setup Available in Metric/Inch)                          |
|                                      | Resolution / Lost Motion | 0.04 um / Within 0.020 mm   |                             | Statistic Result Data CSV or MS Office Output                                   |
|                                      | Dimension                | 195 mm (W) x 209 mm (D) x 53 mm (H)   |                             | Wide Image Measurement  |
| Z Axis                               | Weight                   | 3.9 kg  | Utility                     | Image Format:<br>Exif-JPEG (compressed), Exif-TIFF (non-compressed)             |
|                                      | Effective Stroke         | 30 mm (1.18") Motor<br>85 mm (3.35") Manual                                       |                             | Capture Still Image (1920×1200 ~ 768×480)                                       |
|                                      | Resolution               | 0.05 um / pulse - 5 Phases Motor<br>0.002 Mil / pulse - 5 Phases Motor            |                             | Maximum Non-Tiled Resolution Image:<br>10560 (H) × 6600 (V)                     |
|                                      | Repeatability            | 0.5 um (0.23 Mil)   |                             | Maximum Tiled Resolution Image 15000 (H) × 15000 (V)                            |
|                                      | Weight                   | 1 kg  |                             | Movie - 1920x1200 (25FPS), 860x600 (50FPS)                                      |
|                                      |                          |   |                             | Time Lapse at Specified Time Interval (Minimum 0.1 Sec)                         |

| Advanced Software        |  |
|--------------------------|--|
| 3D Measurement Functions | 3D Display<br>(Original Color / Wireframe / Pseudo Color Display)      |
|                          | 3D Profile Measurement<br>(Height, Length, Angle, Radius, Others)      |
|                          | 3D Model Illumination Simulation                                       |
|                          | 3D Profile Roughness Measurement                                       |
|                          | 3D Volume and Area Measurement   |
|                          | 3D Image Height Point Measurement                                      |
|                          | HDR / Anti-Halation 3D Model   |
|                          | 2D Image 3D Profile Measurement  |
|                          | 3D Image Map CSV Output<br>(Import to Various 3D application Software) |
|                          | Noise Filter and Removal   |
|                          | 3D Model Level Correction  |

|        |  |
|--------|--|
| Tiling | 2D Tiling (Up to 15000 x 15000 pixels) |
|        | Up to                                  |
|        | 3D Tiling (Up to 10000 x 10000 pixels) |
|        | Up to                                  |

| Additional Software for Other PCs / Non-Licensed |                                     |
|--|-------------------------------------|
| E-Z View   | Refer to Standard Software Features |
| 3D Viewer  | Free 3D Image File Viewing Software |

| Recommended PC Specification |  |
|------------------------------|--|
| CPU                          | 4th Generation Intel® Core™ i5 Processor or Higher   |
| RAM                          | 8GB Memory or Higher                                 |
| HDD                          | 500 GB or Higher                                     |
| Monitor                      | Must be 1920 x 1080 Resolution or Higher (8:5 Ratio) |
| OS                           | Windows 7 - 64 bit or Higher                         |

## HPLC Servicing, Validation, Trainings and Preventive Maintenance :

**HPLC Servicing** :HPLC Servicing : We have team of service engineers who can attend to any make of HPLC promptly @the most affordable cost.

**Trainings** :We also take up preventive Maintenance to reduce downtime of HPLC's Trainings.

**AMC's/CMC** :AMC's/CMC :We offer user training both in-House and at customer sites on HPLC principles, operations, trouble-shooting.

**Validations** :Validations :We have protocols for carrying out periodic Validations as per GLP/GMP/USFDA norms.

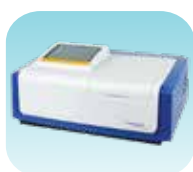
**Instruments** :Instruments :We offer instruments/Renting Services Modules like pumps,detector etc. on Rent.



## About Analytical Technologies

Analytical Technologies is synonymous for offering technologies for doing analysis and is the Fastest Growing Global Brand having presence in at least 96 countries across the global. Analytical Technologies Limited is an ISO:9001 Certified Company engaged in Designing, Manufacturing, Marketing & providing Services for the Analytical, Chromatography, Spectroscopy, Bio Technology, Bio Medical, Clinical Diagnostics, Material Science & General Laboratory Instrumentation. Analytical Technologies, India has across the Country operations with at least 4 Regional Offices, 6 Branch Offices & Service Centers. Distributors & Channel partners worldwide.

## Our Products & Technologies



UV/VIS  
Spectro 2080+  
Double Beam



Infra FTIR



Optima Gas  
Chromatograph  
3007



Optima Gas  
Chromatograph  
2979 Plus



Flash  
Chromatograph



Atomic Absorption  
Spectrophotometer



Liquid Partical  
Counter



Optical Emission  
Spectrophotometer



DSC/TGA



Semi Auto Bio  
Chemistry Analyzer



HEMA 2062  
Hematology  
Analyzer



Micro Plate  
Reader/Washer



URINOVA 2800  
Urine Analyzer



Total Organic  
Carbon 3800



Fully Automated  
CLIA



NOVA-2100  
Chemistry Analyzer



PCR/Gradient PCR/  
RTPCR



TOC  
Analyzer



Laser Particle  
Size Analyzer



Ion Chromatograph



Water purification  
system

## Regulatory compliances



## Corporate Social Responsibility

Analytical Foundation is a nonprofit organization (NGO) found for the purpose of:



# Analytical Foundation

1. Research & Innovation Scientist's awards/QC Professional Award : Quality life is possible by innovation only and the innovation is possible by research only, hence ANALYTICAL FOUNDATION is committed to identify such personalities for their contributions across various field of Science and Technology and awarding them yearly. To participate for award, send us your details of research / testing / publication at [Info@analyticalfoundation.org](mailto:Info@analyticalfoundation.org)

2. Improving quality of life by offering YOGA Training courses, Work shops/Seminars etc.

3. ANALYTICAL FOUNDATION aims to DETOXYFY human minds,souls and body by means of yoga, Meditation, Ayurveda, Health Care, Awards, Media, Events, Camps etc.

## Reach us @



**HPLC Solutions   MultipleLabs   Analytical Bio-Med   Analytical Distributors   Analytical Foundation (Trust)**

**Corporate & Regd. Office:**  
Analytical House, # E67 & E68,  
Ravi Park, Vasna Road, Baroda,  
Gujarat 390 015. INDIA

T: +91 265 2253620  
+91 265 2252839  
+91 265 2252370  
F: +91 265 2254395

E: [info@hplctechnologies.com](mailto:info@hplctechnologies.com)  
[info@multiplelabs.com](mailto:info@multiplelabs.com)  
[info@analyticalgroup.net](mailto:info@analyticalgroup.net)  
[info@analyticalbiomed.com](mailto:info@analyticalbiomed.com)

W. [www.analyticalgroup.net](http://www.analyticalgroup.net)  
[www.hplctechnologies.com](http://www.hplctechnologies.com)  
[www.multiplelabs.com](http://www.multiplelabs.com)  
[www.ais-india.com](http://www.ais-india.com)

Sales & Support Offices:  
across the country :  
Distributors & Channel  
partners World Wide